

***Diam***  ***nd Drive***



**CONCRETE MIX  
FOR LONG LASTING,  
LOW MAINTENANCE  
CURB APPEAL**



**AGGREGATE**  
INDUSTRIES

Mid Atlantic Region

# Nothing Increases the Curb Appeal of Your Quality-Built Home Better than Concrete Driveways. NOTHING.

It's easy to recognize that concrete driveways, walkways and patios stand for quality, but now with Diamond Drive concrete mix, that quality look can be yours at a price that is competitive with asphalt. Compare the installation costs and the life cycle costs and you will see that concrete is the best bet to protect your investment. Its long life, with low maintenance, will continue to give you more satisfaction for years over the other choices.



Diamond Drive will give you long lasting curb appeal with low life cycle costs.

## Let us Pave the Way With Diamond Drive

Diamond Drive concrete mix is a mix specially designed for residential driveways, patios, walks and steps.

# A Better Solution— Down the Road

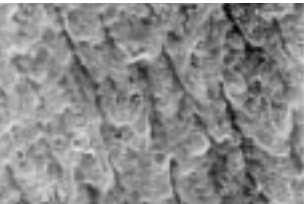
Diamond Drive's unique features mean faster placing and finishing which means you get off the job quicker, with less problems now and in the future.



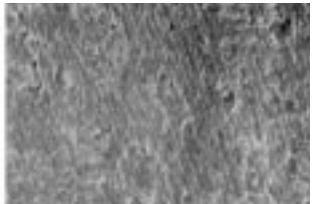
**Unique properties of Diamond Drive make it easier to trowel and finish which means you save labor costs and end up with a more consistent surface.**

Your concrete pours easier, trowels better and sets faster—meaning less time and less labor. Concrete is more durable, and more resistant to severe weather. And because Aggregate Industries quality is built into Diamond Drive you can expect four to five times the life over asphalt with lower maintenance costs.

**Concrete Without  
Finishing Enhancers**



**Diamond Drive Mix  
With Finishing Enhancers**



**As you can see from this magnified photo comparison Diamond Drive has a smoother, more consistent finish than regular concrete.**

Diamond Drive concrete mix is user friendly. It's easy to get a smooth, flat finish. But if you have a question give us a call. Our experienced technical team will walk you through your project and help smooth your way. You get the right mix— every time.



**With computerized central dispatch, along with a full service testing lab you have the Aggregate Industries organization behind you all the way.**

## **Weather or Not**

Diamond Drive Driveway mixes are specially designed for summer or winter. So no matter how hot or cold it may be you can place your concrete with assurance. Because you will know your set time up front, your scheduling is quick and easy.

## **We Will Ease the Way**

Diamond Drive mix is designed to allow for easier placement without sacrificing strength. You'll start with a more workable concrete for improved placement, better finishability and a more consistent surface.

# No Cracking Under Pressure

Diamond Drive contains a unique fiber admixture which reduces plastic shrinkage cracks and provides greater impact and abrasion resistance. In fact, every yard of concrete contains more than 50 million high-tensile microfilaments which act as an intricately woven matrix to reduce cracking by as much as eighty percent.



**Millions of microfibers in Diamond Drive act as a barrier to stop tiny cracks before they become big ones.**

It all adds up to strong, crack-resistant concrete with plenty of curb appeal. And you can be sure your work will also stand the test of time.

Most cracks occur before the concrete has reached its initial set – when the concrete’s tensile strength is at its weakest. This is called plastic shrinkage cracking. The fibers in Diamond Drive are distributed evenly throughout the mix intersecting minute cracks which form on and below the surface. By stopping tiny cracks during the setting process, Diamond Drive Mix makes sure that they don’t become large cracks later.



## Find Out More

To learn more about how we can give your home greater curb appeal, call us today.



*"Exceeding the Standard Every Day"*

Maryland/DC

**800-974-2500**

West Virginia

**800-367-5996**

Northern Virginia

**800-335-2319**

Visit our web site at

**[www.aggregate-us.com](http://www.aggregate-us.com)**

Aggregate Industries uses advanced concrete admixtures supplied by Grace Construction Products, a business unit of W.R. Grace & Co. Conn.