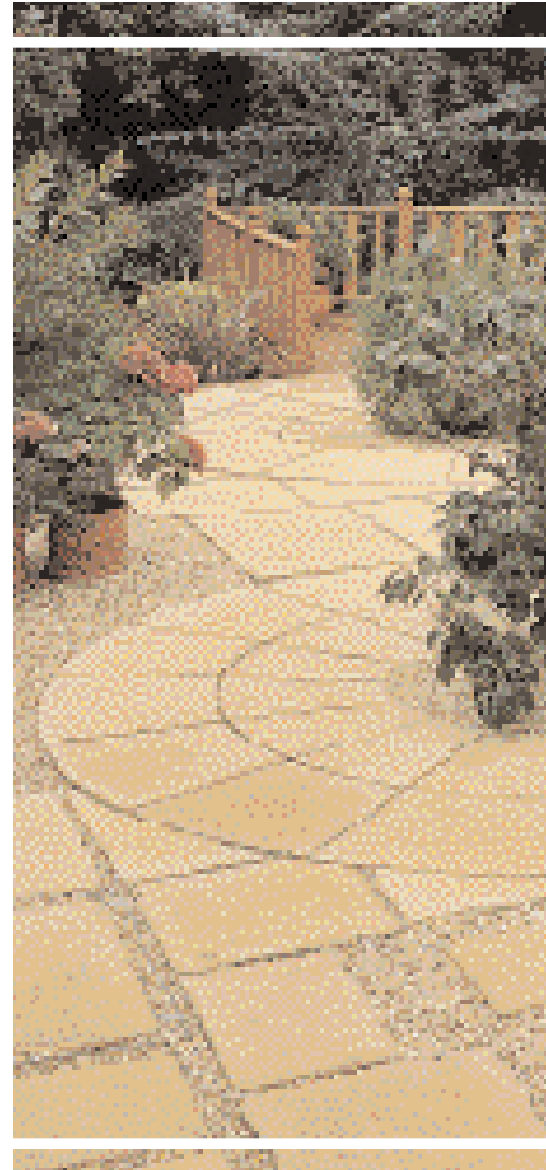




**BRADSTONE**



*~ Garden Landscape Products ~*

# Bradstone Paving & Walling

*Welcome to the Bradstone guide to paving, walling and edging. We want to help you make the most of your garden, to see it as an important asset – a valued extension of your property, a place to relax and enjoy the company of family and friends.*

*Bradstone is a superior outdoor landscaping material, world renowned as an attractive yet cost effective alternative to natural stone. Bradstone embodies an elegance born of an earlier time, while taking advantage of the high performance, low maintenance and long life offered by modern high grade manufacturing technology.*

*Top craftsmen have taken special care to replicate, in hue, complexity and texture, the handcrafted stonework of English tradition in hundreds of faithfully detailed, properly-sized master stone designs. Each master design has been cast into finely detailed moulds, and then used to reproduce a rich line of paving and walling products in almost endless variations.*





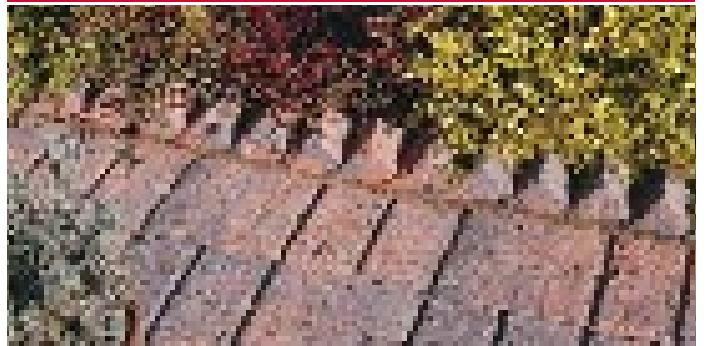
# Transform your garden

## Paving



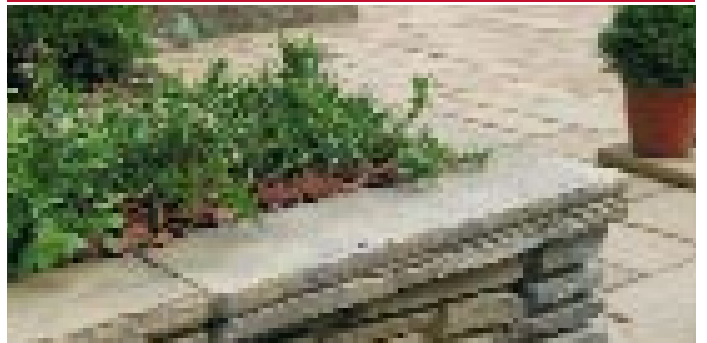
Old Town Flagstones	4	Old Cathedral Paving	10
Old Town Circles	6	Cobble Paving	11
Old Town Square	7	Rustic Brick	11
Wetherdale Paving	8	Log Sleepers	12
Wetherdale Circles	9	Stepping Stones	12

## Edgings & Accents



Rope Top Edging	13	Citadel Edging	13
Saw-Tooth Edging	13	Tile on Edge	13
Log Edging	13		

## Walling



Madoc Walling	14
---------------	----

## Installation Guide

Paving	15
Walling	15



Gironde shade ▲

## *Old Town™ Flagstones*

*The weathered, slightly riven appearance of the Bradstone Old Town Flagstones range lends itself perfectly to projects where an impression of elegance is desired.*

*This traditional style garden paving bears a remarkably close visual appearance to natural stone and it can be truly random laid due to the availability of six different sizes.*

*For convenience, Old Town Flagstones are available in a ready made, mixed sized, Patio Pack.*



Grey/green shade ▲



Mellow Cotswold shade ▲

## Patio Packs

Size		
Metric	Imperial	Pieces
60cm x 60cm	24 x 24"	3
45cm x 60cm	18 x 24"	3
30cm x 60cm	12 x 24"	9
45cm x 45cm	18 x 18"	2
30cm x 45cm	12 x 18"	12
30cm x 30cm	12 x 12"	6

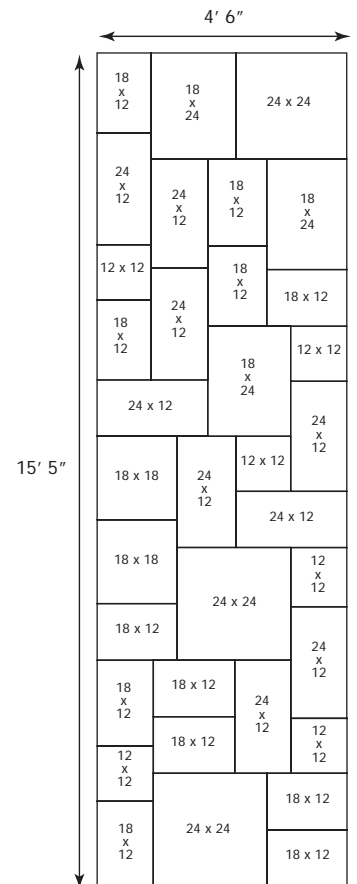
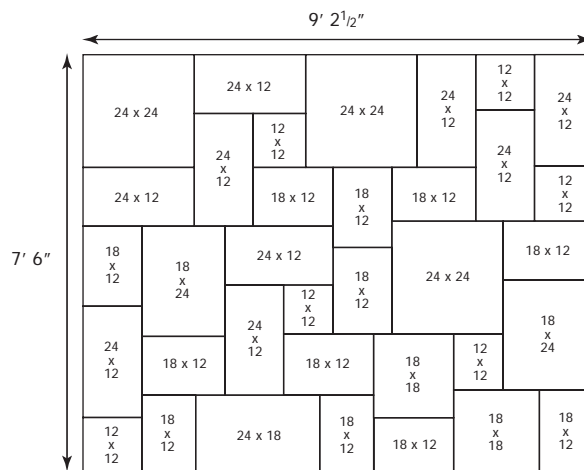
Total surface area as laid 69 square feet

These layouts are suggestions only, there are many combinations that are only limited by the imagination. Any of the suggested guidelines can be increased in size according to the given situation.

Individual sizes also available:

Size	
Metric	Imperial
90cm x 60cm	36 x 24"
75cm x 75cm	30 x 30"
75cm x 60cm	30 x 24"
60cm x 60cm	24 x 24"
45cm x 45cm	18 x 18"

Old Town Paving is supplied in packs of a combination of paving sizes which fit together to produce a random appearance when laid. Two easy laying options are possible using the Pack which contains 69 square feet of paving. To increase the size of the patio simply increase the number of packs used.



*Mellow Cotswold*



*Grey/Green*



*Gironde*



Mellow Cotswold shade ▲

## *Old Town™ Flagstone Circles*

*Circles are a regular feature of beautiful gardens created by leading designers and landscapers. They are an ideal means of creating an impressive and distinctive focal point, drawing the eye to a favoured area of the garden.*

*Old Town Flagstone Circles have all the authentic character of reclaimed flagstones but in a circle design. This has been made all the easier by pre-packing all the units required.*

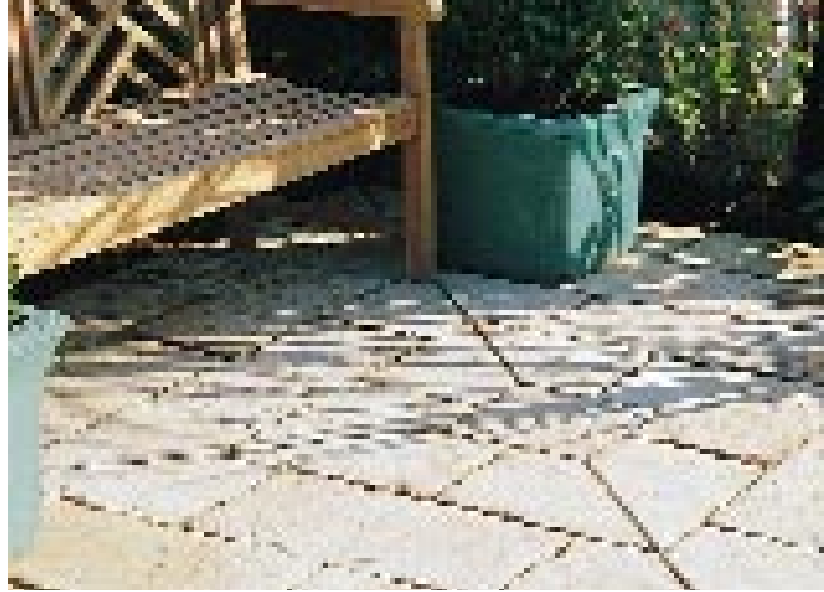


◀ Grey/green shade ▶



# Old Town™ Square

This classic design features a series of rectangular bands of paving running out from a single central unit and radial lines that provide the quartered effect. Although visually complex it is easy to achieve as the hand crafted mitred corner is in fact a single unit. As all the paving for the Square is contained in a single Patio Pack, the whole project is easy to achieve.



Gironde shade ▲

## Old Town Circles

### Patio Pack A (Small Circle)\*

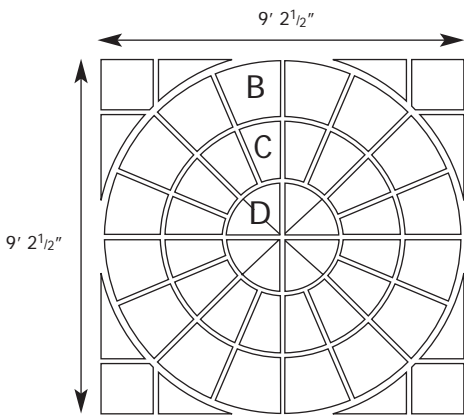
Size		
Metric	Imperial	Pieces
50cm x 45cm x 34cm	20 x 18 x 13"	16
34cm x 45cm x 16cm	13 x 18 x 6"	16
45cm x 45cm	18 x 18"	4

Diameter of 9' 2 1/2"

Total surface area as laid 63 square feet

\*Add on pack also available to increase the circle diameter to 13' 2 1/2".

### Small Old Town Circle with corner accessories



## Old Town Square

### Size

Metric	Imperial	Pieces
45cm/30 x 45cm/30	18 x 18"	16
30cm x 60cm	12 x 24"	24
30cm x 30cm	12 x 12"	1

Total surface area as laid 80 square feet



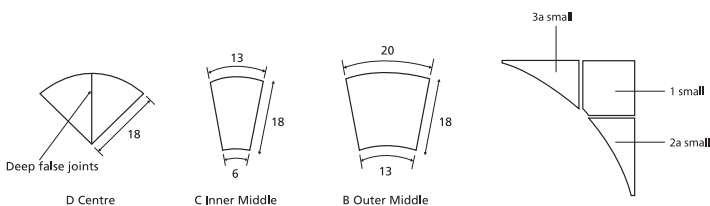
Mellow Cotswold



Grey/Green



Gironde





York Brown shade ▲

## *Wetherdale Paving*

*Wetherdale captures the character of freshly quarried stone, right down to the distinctive edge detailing. It looks effective laid on its own, interspersed with planting, set as stepping stones into gravel, or as a contrast to other Bradstone products. Its edge detail makes it especially suitable for use as steps or as a coping on walls or pillars.*

*Six shapes and sizes allow 'random laying' patterns to be created and for convenience these are supplied in a mixed sized Patio Pack.*



Weathered Cotswold shade ▲



Weathered Cotswold shade ▲

## Wetherdale Circles

This attractive feature can be used within a larger area of Wetherdale Paving or can provide a small intimate patio area in its own right. Building this circle has been made all the easier by pre-packing all the units required in a Patio Pack.

### Wetherdale Paving

#### Size

Metric	Imperial	Pieces
60cm x 60cm*	24 x 24"	3
45cm x 60cm	18 x 24"	3
30cm x 60cm	12 x 24"	9
45cm x 45cm*	18 x 18"	2
30cm x 45cm	12 x 18"	12
30cm x 30cm	12 x 12"	6

\*Also available in single size packs

### Pack A Small Wetherdale Circle\*

#### Size

Metric	Imperial	Pieces
460cm x 440cm x 285cm	18 <sup>1</sup> / <sub>2</sub> x 17 <sup>1</sup> / <sub>2</sub> x 11"	16
285cm x 440cm x 110cm	11 x 17 <sup>1</sup> / <sub>2</sub> x 4"	16
600cm x 295cm	24 x 12"	2

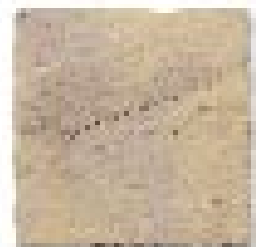
Diameter of 7' 11"

Total surface area as laid 50 square feet

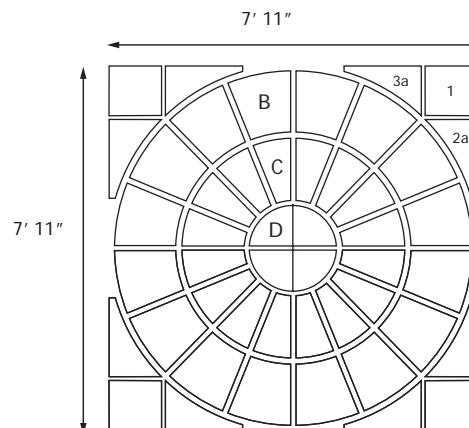
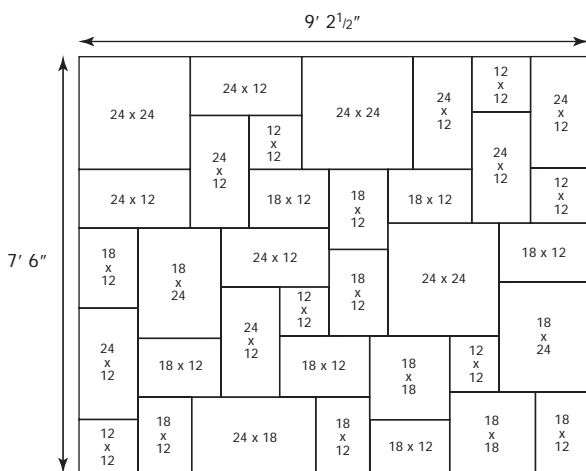
\*Add on pack also available to increase the circle diameter to 10' 11".



York Brown



Weathered Cotswold



Wetherdale Paving is supplied in packs of a combination of paving sizes which fit together to produce a random appearance when laid. Two easy laying options are possible using the Pack which contains 69 square feet of paving. To increase the size of the patio simply increase the number of packs used.



## Old Cathedral Paving

*Old Cathedral Paving features a subtle hewn surface with random tooled markings, reminiscent of timeworn stone paving. Adding to the authentic effect is the subtle blend of shades and four sizes used.*

*Again, we make this product easy to use by producing a Patio Pack containing a balanced blend of shades and sizes.*

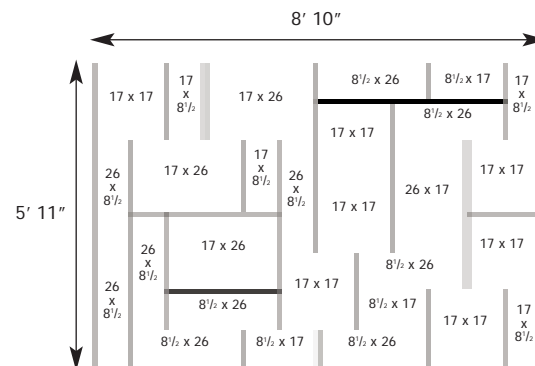
Old Cathedral paving is supplied in packs of a combination of paving sizes which fit together to produce a random appearance when laid.

Metric	Imperial	Total
215 x 440mm	8 <sup>1</sup> / <sub>2</sub> " x 17"	7
665 x 440mm	26" x 17"	4
665 x 215mm	26" x 8 <sup>1</sup> / <sub>2</sub> "	10
440 x 440mm	17" x 17"	7
Total Pieces		28

Total surface area as laid 51 square feet



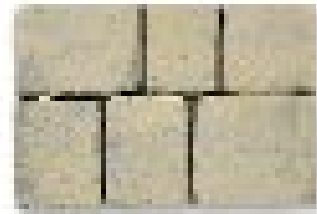
*Antique Brown*





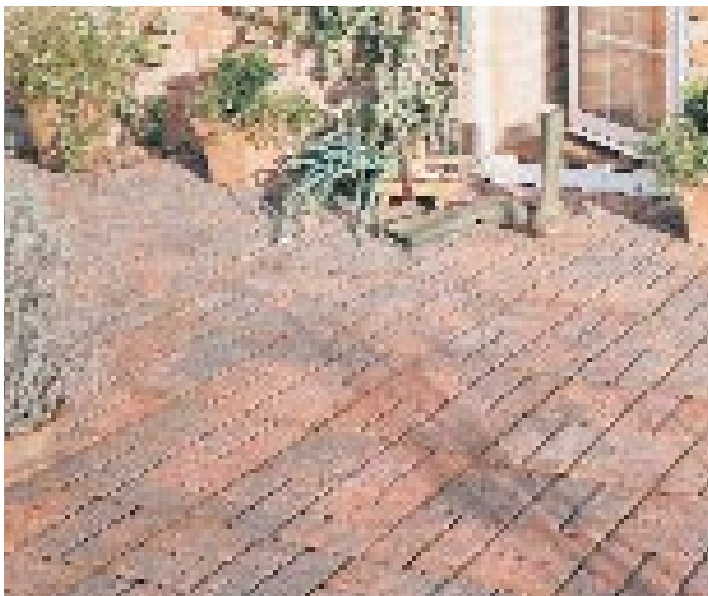
## *Cobble Paving*

*Cobble paving, features a number of authentic cobble profiles in a single paving unit with each cobble separated by a deep false joint. When laid all the joints are pointed and the overall effect is of individually laid cobbles. Both 'coursed' or 'random' effects can be achieved, as can interesting edge details by simply removing individual cobbles.*



*Weathered Cotswold*

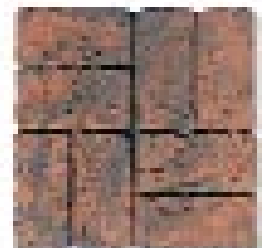
*18" x 12" x 2"*



## *Rustic Brick*

*Bradstone's Rustic Brick Paving instantly creates the basket-weave pattern of single bricks with minimal effort. The small scale geometric pattern will blend with period and more modern properties alike.*

*18" x 18" x 1 1/2"*



*Brindle Red*



## Log Sleepers

*Bradstone Log Sleepers are an authentic, maintenance-free alternative to traditional railway sleepers, which are hard to come by and can be expensive.*

*Extremely versatile, Log Sleepers can be used for paving or as lawn or patio edging. Alternatively lay vertically in staggered heights to create a tall boundary to enclose raised beds.*



24" x 10" x 1 1/2"

*Antique Brown*



## Wetherdale Stepping Stones

*Stepping stones are an easy and affordable means of providing a garden path or access through a wide flowerbed or border.*

*Wetherdale Stepping Stones with their strong riven profile reminiscent of newly quarried stone blend naturally in these circumstances.*

22" x 16 1/2" x 1 1/2"



*Weathered Cotswold*



*York Brown*

# Edgings & Accent Pieces

## Rope Top Edging



Edging: 18" x 6" x 2"  
 Corner Unit: 2" x 2" x 12"

Shades: Blue/Black, Terracota, Weathered Terracota



## Saw-Tooth Edging



Edging: 22" x 4" x 6"  
 Shade: Brindle Red

## Log Edging



Edging: 20" x 4" x 7 1/2"  
 Shade: Antique Brown

## Citadel Edging



20" x 10" x 2"

Shades: Weathered Cotswold and York Brown

## Accent Pieces



### Tile On Edge

Give your patio the finishing touch with these accent pieces which capture the style and warm color of terracotta.

Straight: 18" x 9"  
 Curve: 24 1/4" x 9"  
 Corner: 10" x 10"  
 Shade: Mellow Terracotta



Mellow Cotswold shade ▲

## Madoc Walling

Madoc walling captures the beauty of slate, and is an easy build walling block. The authentic appearance of, dry laid, natural slate is achieved by reproducing the profiles of a number of stones in a single, easy to handle, "z" shaped Madoc block.

Full Block 24" x 4" x 6"

Coping 18½" x 5" x 1½"

Infill unit 4" x 4" x 2¾"



Weathered Cotswold shade ▲

*Gironde*



*Weathered Cotswold*



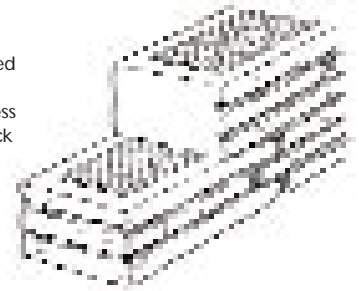
*Mellow Cotswold*



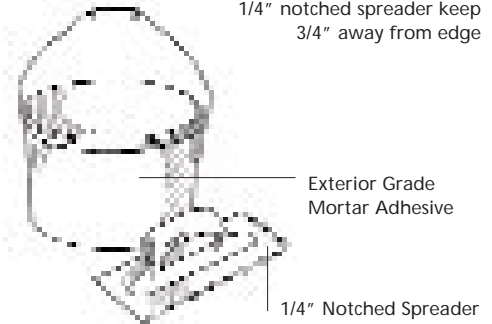
## A practical guide to building with Madoc Walling

Building with Madoc walling could not be simpler. Blocks are placed onto each other, leaving no gaps, and are bonded together using a thin coat of mortar adhesive applied to horizontal surfaces with a plastic spreader. Start in one corner and apply a strip of adhesive to the base equal to the width of the block and of sufficient thickness (at least 1/4") to level the block. Position the first block in place using a light twisting action. Use a spirit level to check that it is level and wipe away any excess mortar. Apply a 1/8" coat of adhesive to the top piece onto which the next block will sit. Position the second block in place to form the corner and check for alignment and level.

Lay the remaining base blocks and infill blocks (supplied to fill voids) in the same way, working from left to right. Apply a 1/8" thick coat of adhesive to the entire top surface of the first course and build up the second course as before.



Bond with Mortar Adhesive  
1/8" thick applied with  
1/4" notched spreader keep  
3/4" away from edge



## A practical guide to laying paving

### Base Preparation

- Remove top soil from the area to be paved.
- Base materials may consist of granular materials (Crushed aggregates or limestone screenings) to be placed in, no greater than a 6" layer. The thickness of base will vary with type of soil subgrade and climate, colder climates may require thicker bases.
- The base layer should be thoroughly compacted with enough water to aid compaction, increase density and also control dust.
- Once the desired compaction has been achieved place a 1/2" bedding layer of loose sand on top, ensuring that the base is level by using a string line or screeding board.
- Patios should be laid with slope to drain off rain water. This slope (away from buildings) is normally a drop of 1" for each yard in length.



### Laying Paving

- Choose the design that you wish to lay, then starting in a corner carefully place the first slab in position and gently tap down using a rubber mallet.
- The bedding layer of loose sand allows for levelling the surface of pavers which may vary from piece to piece due to their texture.
- Slabs may be laid with up to 1/4" joints and filled with dry sand on completion of installation.
- Under no circumstances should a mechanical compactor be used directly on the slab surface, time and gravity will allow each slab to settle to its proper level.



### Laying Paving in Mortar (optional)

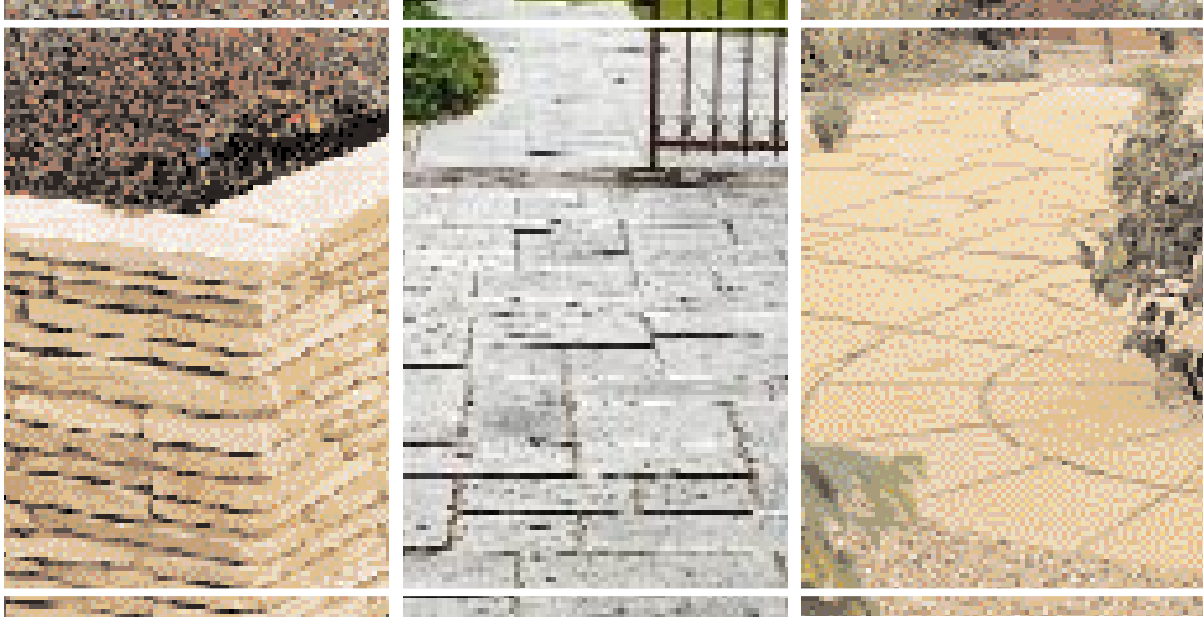
- Paving slabs may be bedded on concrete and if this option is chosen then mortar needs to be mixed for use for ground preparation and pointing.
- Pre mixed mortars are suggested – follow manufacturers instructions.
- Slabs should be laid based on a design chosen and allow for 1/4" joints (if desired) between stones.
- The slabs should be laid onto 5 generous spots of very workable mortar so that on pressing into place the mortar displaces to occupy almost the entire under surface of the slab ensuring good support on compression.
- The spot method makes accurate and even slab laying easier but on completion needs to be protected from pedestrian use for 1 to 2 days.
- Pointing (filling in the joints) is required if slabs are laid in mortar.
- The semi dry pointing mix is taken to the joint on a large trowel, keeping the mix off the paving.
- Using a slightly smaller pointing trowel or slicker, the mix is compacted into the joints great care must be taken to keep the paving free from cement stains.
- The pointing trowel or slicker is then used to push and compact the mortar and to clear any remaining surface mortar particles and the finished joint should have a smooth, shallow shape.



### Important

- De-icing salts may not be used on BRADSTONE Paving Products, they are detrimental to the surface of the products.





**BRADSTONE**

[www.bradstoneusa.com](http://www.bradstoneusa.com)

?????????  
?????????

Aggregate Industries cannot be responsible for the effects of de-icing salts which are detrimental to the surface of concrete products, nor for the color fading due to the natural occurring phenomenon of efflorescence inherent in all top quality products with a high cement content. Bradstone Paving is recommended for only backyard applications where proximity with de-icing salts will not occur. (De-icing salts from driveways roadways and sidewalks that make contact with Bradstone Paving may damage the surface). Bradstone is a reconstructed stone whilst every care is taken to ensure that the color reproductions are accurate, it is impossible to reproduce its subtle shades exactly. We advise inspection of samples before any purchase. The colors reproduced in this brochure are as accurate as modern printing will allow.

Bradstone and Old Town are registered trademarks of Aggregate Industries UK Ltd.  
Wetherdale, Old Cathedral, Madoc and Patio Pack are trade names of Aggregate Industries UK Ltd.